

## FCC Warnings

This device complies with Part 15 of the FCC rules. Operation subject to the following two conditions:

1. this device may not cause harmful interference, and
2. this device must accept any interference received, including interference that may cause undesired operation.

### Note:

This equipment has been tested and found to comply with the limitations of a Class B digital device, pursuant to Part 15 of the FCC rules. These limits are designed to provide reasonable protection against harmful interference in a residential installation. This equipment generates, uses, and can radiate, radio frequency energy and, if not installed and used in accordance with the instructions, may cause harmful interference to radio and television reception. There is no guarantee, however, that interference will not occur in a particular installation. If this equipment does cause harmful interference to radio or television reception, which can be determined by turning the equipment off and on, the user is encouraged to correct the interference by one or more of the following measures:

- reorient or relocate the receiving antenna
- increase the separation between the equipment and receiver
- connect the equipment to an outlet on a circuit different from that to which the receiver is connected
- consult the dealer or an experienced radio/TV technician for help

The user is cautioned that changes or modifications not expressly approved by the party responsible for compliance could void the user's authority to operate the equipment.

#### Responsible Party:

VXI Corporation  
One Front Street  
Rollinsford, NH 03869 USA  
Phone: (800) 742-8588 or (603) 742-2888  
E-mail: tuffset@vxicorp.com

Under conditions of electrostatic discharge, the TuffSet™ Digital USB Translator unit may malfunction and may require the user to reset it by unplugging it from the computer, and then reconnecting it to the USB port.

All specifications and installation/usage procedures are subject to change without notice

All trademarks are the property of their respective owners.

©Copyright 2001 VXI Corporation



VXI Corporation  
One Front Street  
Rollinsford, NH 03869 USA  
Phone: (800) 742-8588 or (603) 742-2888  
E-mail: tuffset@vxicorp.com  
Website: www.vxicorp.com



P/N 200291B



# TuffSet™ Digital USB Headsets



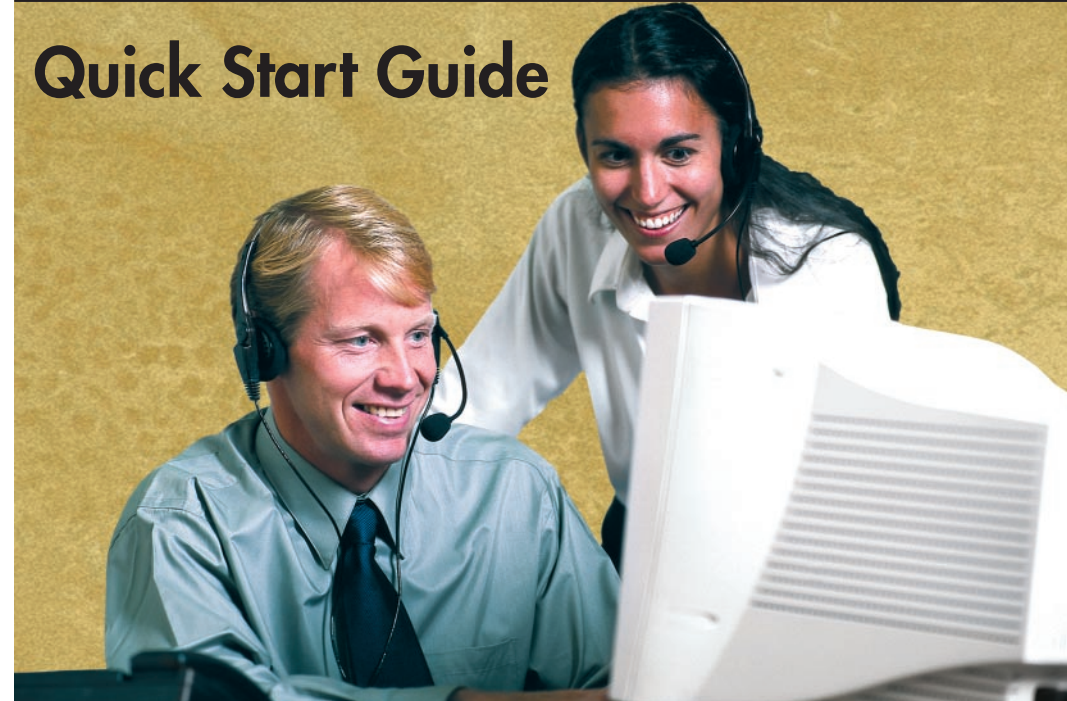
Built To Answer The Call

TuffSet™ 10 Headset  
with USB Translator

TuffSet™ 36 Headset  
with USB Translator

TuffSet™ 20 Headset  
with USB Translator

## Quick Start Guide



## System Requirements

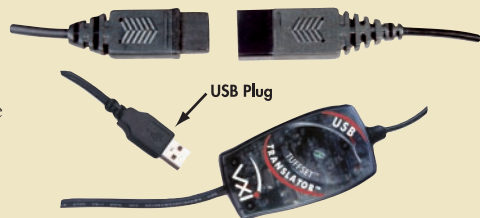
Your computer should be running Windows® 2000, Windows Me, or Windows 98 Second Edition, or Apple Macintosh® OS 9.0.4 or higher with an available USB port.

## General

Before you install your TuffSet™ USB 10, 20, or 36 Headset, be sure your computer is running and that you exit all running applications.

### 1. Connect the TuffSet™ Digital USB Headset To Your Computer.

1. Plug the Translator Quick Disconnect cord into the headset Quick Disconnect jack.
2. Plug the USB plug into the USB port on your computer. On Windows systems, as soon as the USB plug is inserted into the USB port, the system will detect the addition of the headset, and the Add New Hardware Wizard will run automatically as described in steps 2 through 4 below. Macintosh users, please skip to step 5 below.



### 2. Windows Add New Hardware Wizard - First Pass - USB Composite Device

Note: Windows 98 Second Edition Upgrade users may need the Windows 98 Second Edition Upgrade CDROM available.

1. The Add New Hardware Wizard should detect the new “USB Composite Device.” Click *Next*. If the device is not detected, refer to the Troubleshooting section of the TuffSet™ Digital USB Headset User Guide PDF file on the VXI website at [www.vxicorp.com](http://www.vxicorp.com).
2. The next window asks “What do you want Windows to do?” Select “Search for the best driver for your device.” Click *Next*.
3. The next window asks “Where do you want Windows to search?” Select the hard drive only with the default location in the text box (either “c:\Windows”, or “c:\Windows\Options\Cabs” depending on your PC.) Click *Next*.
4. The next window states: Windows will now install the driver for “USB Composite Device.” Click *Next*.
5. Click *Finish*.



### 3. Windows Add New Hardware Wizard - Second Pass - USB Human Interface Device

The second pass of the Add New Hardware Wizard detects a USB Human Interface Device. This portion of the installation proceeds like the first, replacing “USB Composite Device” with “USB Human Interface Device.”

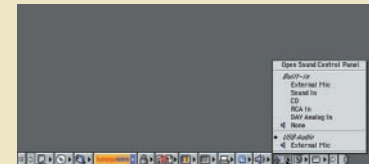
### 4. Windows Add New Hardware Wizard - Third Pass - USB Audio Device

The third pass of the Add New Hardware Wizard detects a USB Audio Device. This portion of the installation proceeds like the first, replacing “USB Composite Device” with “USB Audio Device.” The Windows drivers have now been installed.

## 5. Macintosh Users

Note: Plug the VXI TuffSet™ Digital USB Headset directly into your Mac’s USB port, not the keyboard USB hub.

1. Configure the Microphone Control Strip. Click on the microphone icon on the control strip. In the pop-up menu, click on USB Audio. Do the same for the speaker icon.
2. Configure the Sound Control Panel. Open the Sound Control Panel and select **Input**. Verify that USB Audio is selected as the sound input source. If not selected, click on USB Audio in the list. Do the same for the **Output** for the sound output. Close the Sound Control Panel.



For installation verification or troubleshooting, please refer to the Troubleshooting section of the TuffSet™ Digital USB Headset User Guide PDF file on the VXI website at [www.vxicorp.com](http://www.vxicorp.com).



## Installation Verification and Troubleshooting

First, check to be sure that the green LED light appears on the Translator housing box. When this light is on, it indicates that power is being properly delivered to the unit. To verify the installation or for troubleshooting tips, please refer to the TuffSet™ Digital USB Headset User Guide documentation on VXI Corporation’s website, at [www.vxicorp.com](http://www.vxicorp.com).

## Using the TuffSet™ Digital USB Headsets

### Adjusting the Microphone

The microphone boom can be positioned on either side of your mouth by rotating the headset and swiveling the boom. For the TuffSet™ 20, note that the normal Left/Right stereo is designed for the microphone to be on the right side of your mouth; with the microphone located on the left side, the channels will be reversed. When the microphone boom is adjusted to your liking, be sure that a white dot or the word “TALK” engraved on the microphone housing faces your mouth. Adjust the microphone so that it is positioned about one finger-width away from the corner of your mouth.



### Speech Recognition Applications

Your VXI TuffSet™ Digital USB Headset will work as is with all major speech recognition software applications from leading vendors including IBM®, Dragon Systems®, and Lemout & Hauspic®.

### Voice Over the Internet (VoIP) or Internet Telephone Applications

**IMPORTANT!** To activate your VXI TuffSet™ Digital USB Headset for Internet telephone calls, visit the VXI website at [www.vxicorp.com/download.htm](http://www.vxicorp.com/download.htm).

Do Not Print This Page

Tuffset USB Quick Start Card

Part#: 200291B

A/W#: 200292B

Art Size: 11" x 7"

Fold Size: 5.5" x 7"

Color: 4/4 CMYK

Paper: Kromecote 10pt. C2S